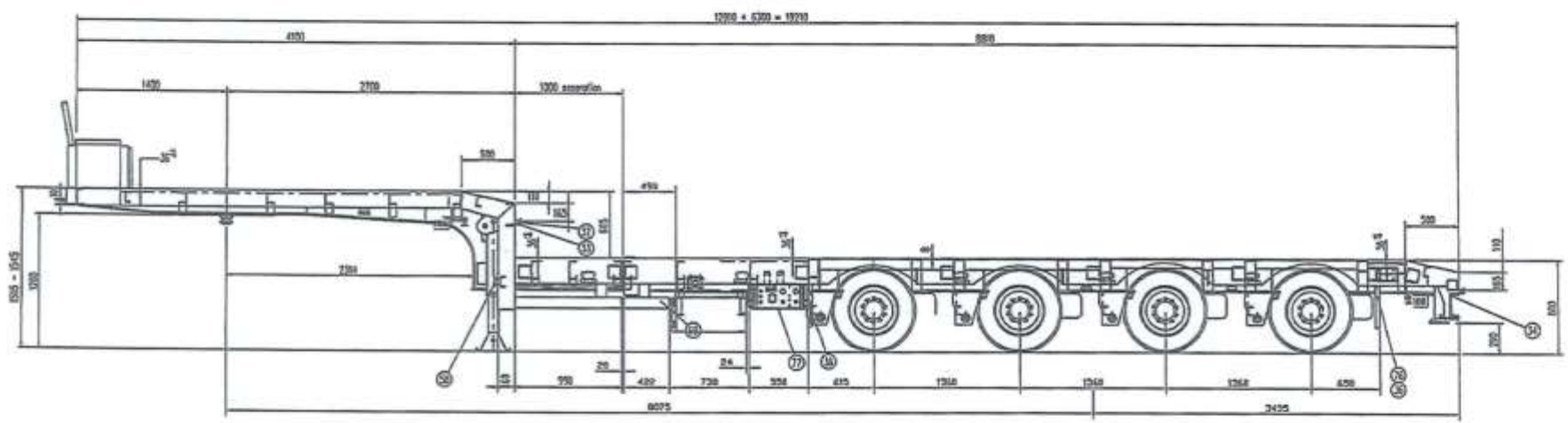
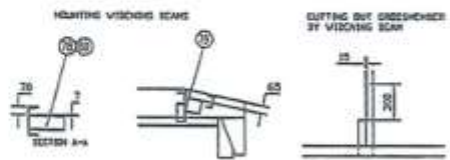


LAST TRAVELER 415mm FROM THE SIDE



FIT THE HUBWARDS 20 MM INWARDS THE SIDE DRIVE



Pos.	Code	Description	Length	Stroke	Material	Attachment
1		CONNECTION FOR HUBWARD EXTENSION				
2		CONNECTION FOR HUBWARD EXTENSION				
3		CONNECTION FOR HUBWARD EXTENSION				
4		CONNECTION FOR HUBWARD EXTENSION				
5		CONNECTION FOR HUBWARD EXTENSION				
6		CONNECTION FOR HUBWARD EXTENSION				
7		CONNECTION FOR HUBWARD EXTENSION				
8		CONNECTION FOR HUBWARD EXTENSION				
9		CONNECTION FOR HUBWARD EXTENSION				
10		CONNECTION FOR HUBWARD EXTENSION				
11		CONNECTION FOR HUBWARD EXTENSION				
12		CONNECTION FOR HUBWARD EXTENSION				
13		CONNECTION FOR HUBWARD EXTENSION				
14		CONNECTION FOR HUBWARD EXTENSION				
15		CONNECTION FOR HUBWARD EXTENSION				
16		CONNECTION FOR HUBWARD EXTENSION				
17		CONNECTION FOR HUBWARD EXTENSION				
18		CONNECTION FOR HUBWARD EXTENSION				
19		CONNECTION FOR HUBWARD EXTENSION				
20		CONNECTION FOR HUBWARD EXTENSION				
21		CONNECTION FOR HUBWARD EXTENSION				
22		CONNECTION FOR HUBWARD EXTENSION				
23		CONNECTION FOR HUBWARD EXTENSION				
24		CONNECTION FOR HUBWARD EXTENSION				
25		CONNECTION FOR HUBWARD EXTENSION				
26		CONNECTION FOR HUBWARD EXTENSION				
27		CONNECTION FOR HUBWARD EXTENSION				
28		CONNECTION FOR HUBWARD EXTENSION				
29		CONNECTION FOR HUBWARD EXTENSION				
30		CONNECTION FOR HUBWARD EXTENSION				
TSR Bommel b.v.			SD-110-2-259			